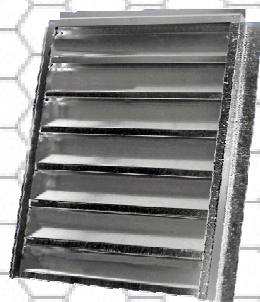


SOFFIT VENT



GABLE VENT

AVAILABLE IN:

GABLE VENTS

EAVE VENTS

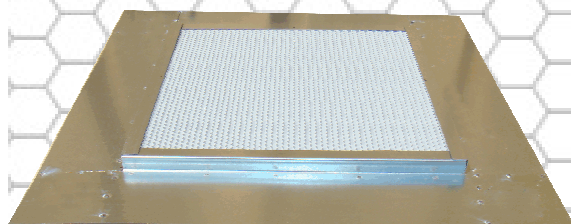
FOUNDATION VENTS

SOFFIT VENTS

RETRO-FIT KITS &

SUB BASE FLASH

(WORKS WITH **ANY**
DORMER VENTS)



SUB BASE FLASHING

VULCAN VENTS ARE:

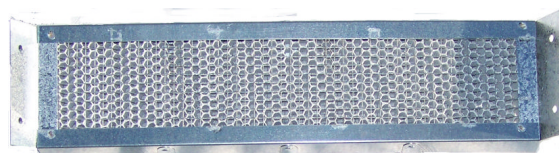
🟡 ATTRACTIVE

🟡 EASY TO INSTALL

🟡 FIRE & EMBER SAFE

🟡 GREAT FOR NFVA

🟡 TESTED BY WFCi



EAVE VENT



PRODUCT DESIGN & PATENTED BY:

VULCAN TECHNOLOGIES, INC

Distributed by: BEST MATERIALS LLC
Phoenix, AZ 85009
800-474-7570 www.bestmaterials.com

"Vulcan Vent™"
The vent that stops
dangerous embers and
fire in its tracks...



Above: Official Photo from Certified Lab

**This lab tested, patented
vent design prevents fire
AND ember penetration.**

Burning Embers Travel Long Distances

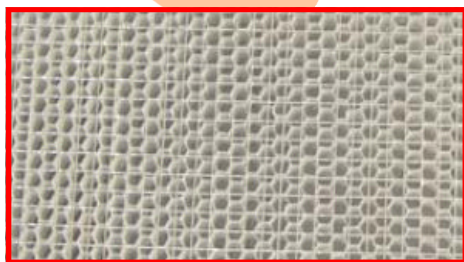
Burning Embers from fires miles away can attack your home. Proven by independent testing at Western Fire Center Inc, Vulcan Vent™ will keep dangerous embers from entering the ventilation areas of your home even when the fire is still far away. Then, in the presence of fire the vent will self close preventing fire as well as ember intrusion.

How does it work?

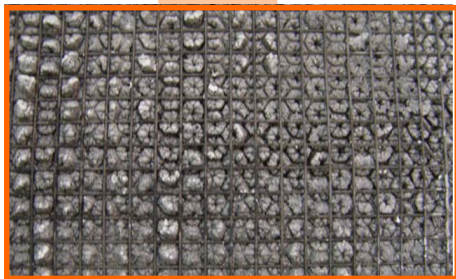
Vulcan Vent™ begins with a standard frame design, but behind that is 1/4" hexagon expanded aluminum, coated with an intumescent coating from Firefree Coatings Inc.

The coating swells up when exposed to high temperatures and closes off the cells, effectively blocking off fire & ember intrusion.

BEFORE EXPOSURE TO HEAT:



AFTER EXPOSURE TO HEAT:

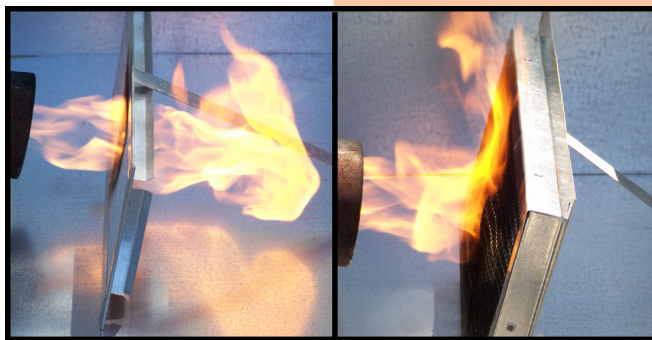


This unique design blocks not only Fire & Embers but also the HEAT that would otherwise cause your attic to burst into flames.

Vulcan Vent™ products protect against fire without sacrificing air flow.

The unique design of the Vulcan Vent™ protects against fire and dangerous ember intrusion and at the same time allows a high ratio of Net Free Vent Area (NFVA). The honeycomb core is made of 2 mil aluminum. It's lightweight and strong and has great air flow.

The Vulcan Vent™ was designed to meet the new California Building code SFM 12-7A of the California Wildland-Urban Interface fire code program.



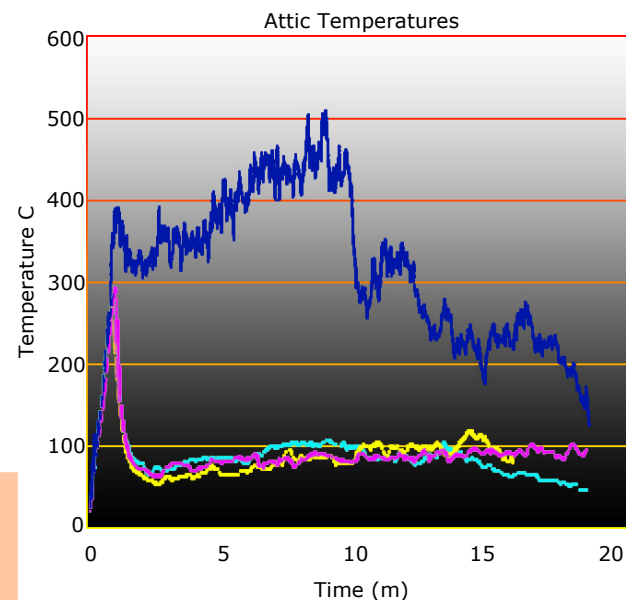
Traditional Vent

Vulcan Vent®

The above photos reveals the difference between a standard vent and a Vulcan Vent™.

With Vulcan Vent™, your house can breathe but embers and fire don't stand a chance!

Quick Response Time:



The above graph shows the quick response time of the intumescent coating in stopping fire "cold" from reaching the attic space. The blue line shows the results of a standard vent and the bottom three lines show the results of three different tests of the Vulcan Vent™.